

Custom All Aluminum Stacker Trailers

BUILT FOR SPEED

High Quality Trailers Built by Racers for Racers

SEMI, GOOSENECK, FIFTH WHEEL AND PULL-A-LONG TRAILERS

LEGGETT STACKER TRAILER



Call for a Quote - 815.426.2761

www.tande-racetrailers.com





TENT
Auto-Linkers

DANGER PINCH POINT

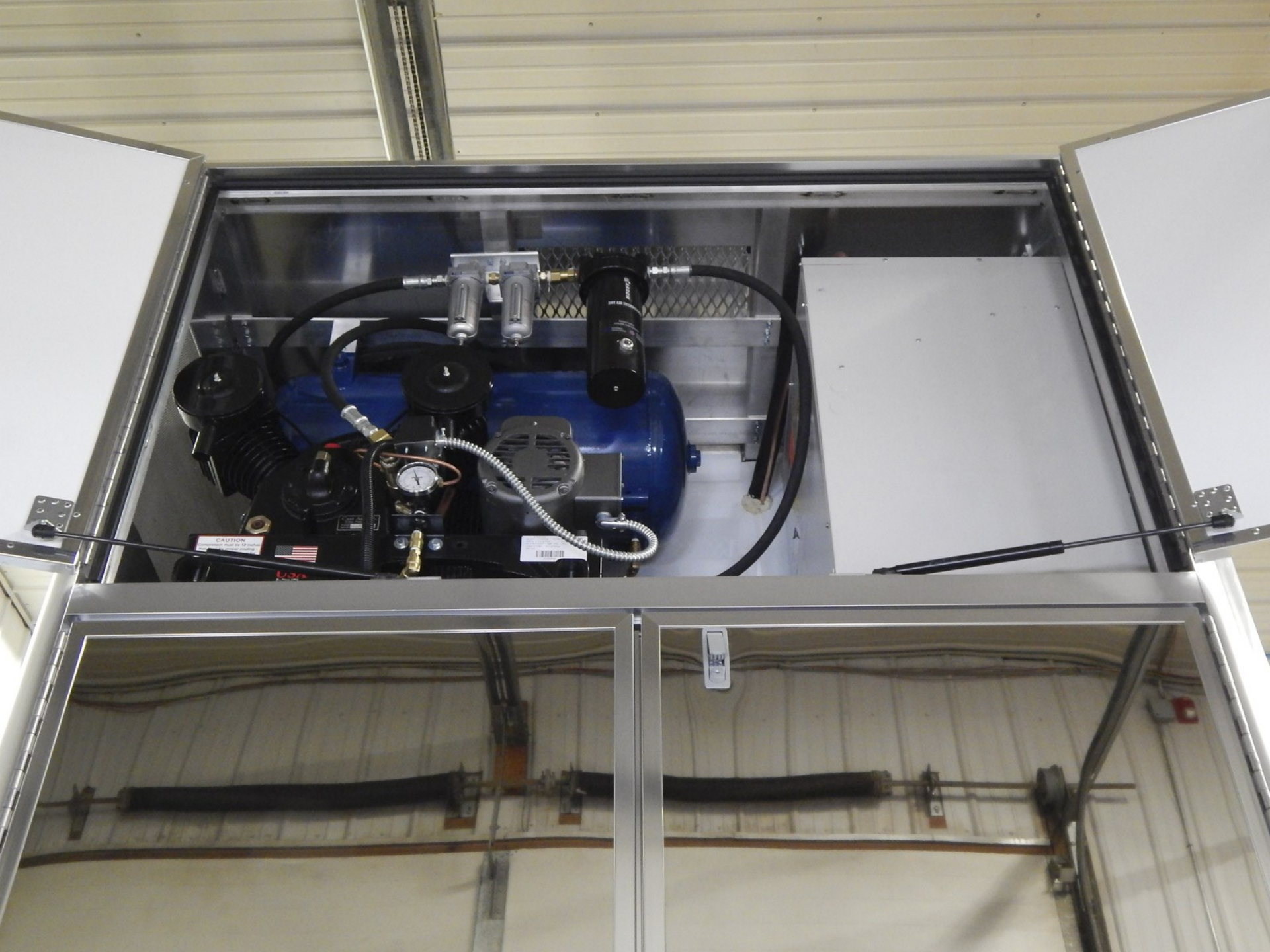






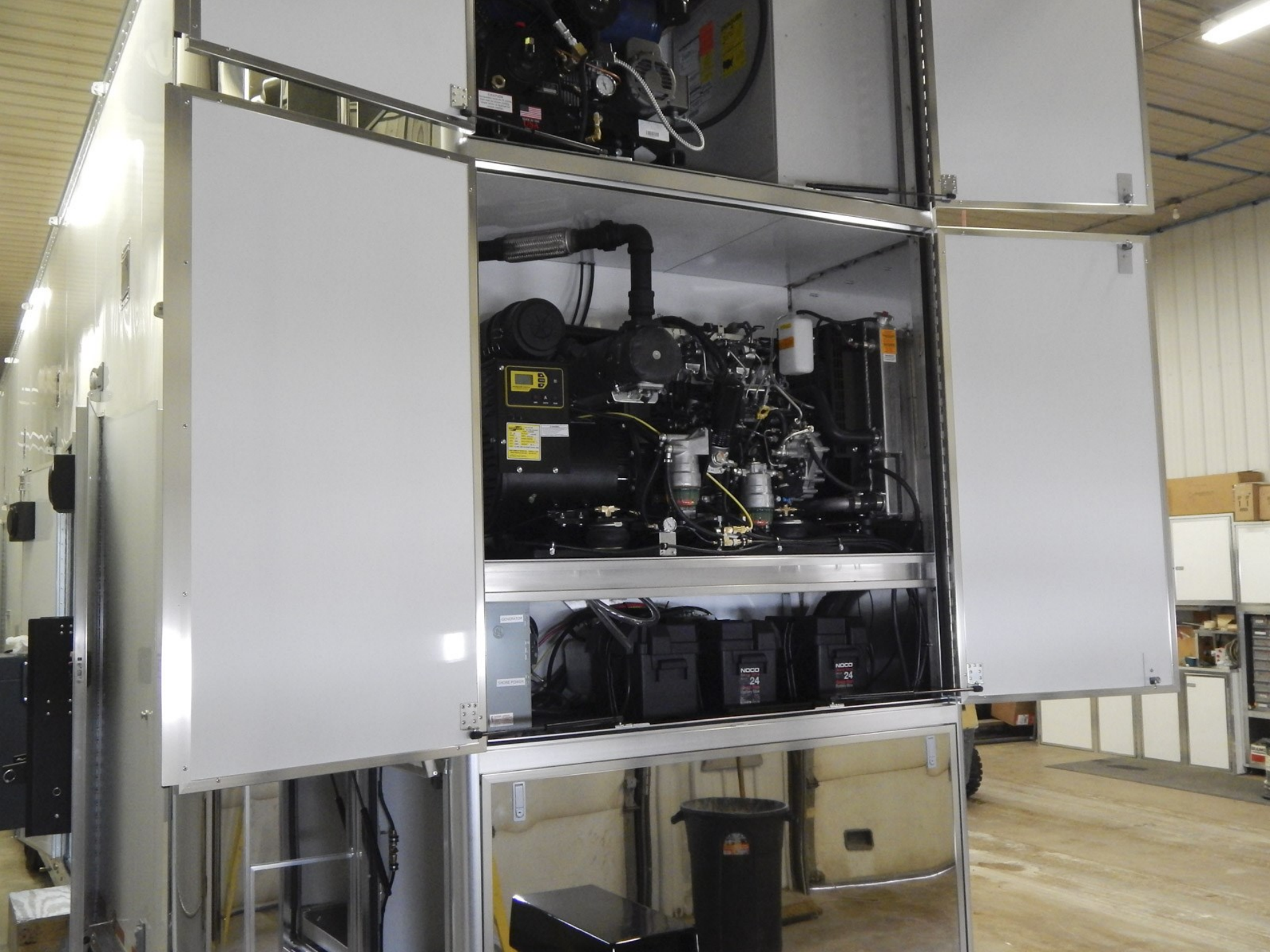
DANGER
Hazardous material
See back of trailer





CAUTION
Do not touch the hot parts
of the compressor.



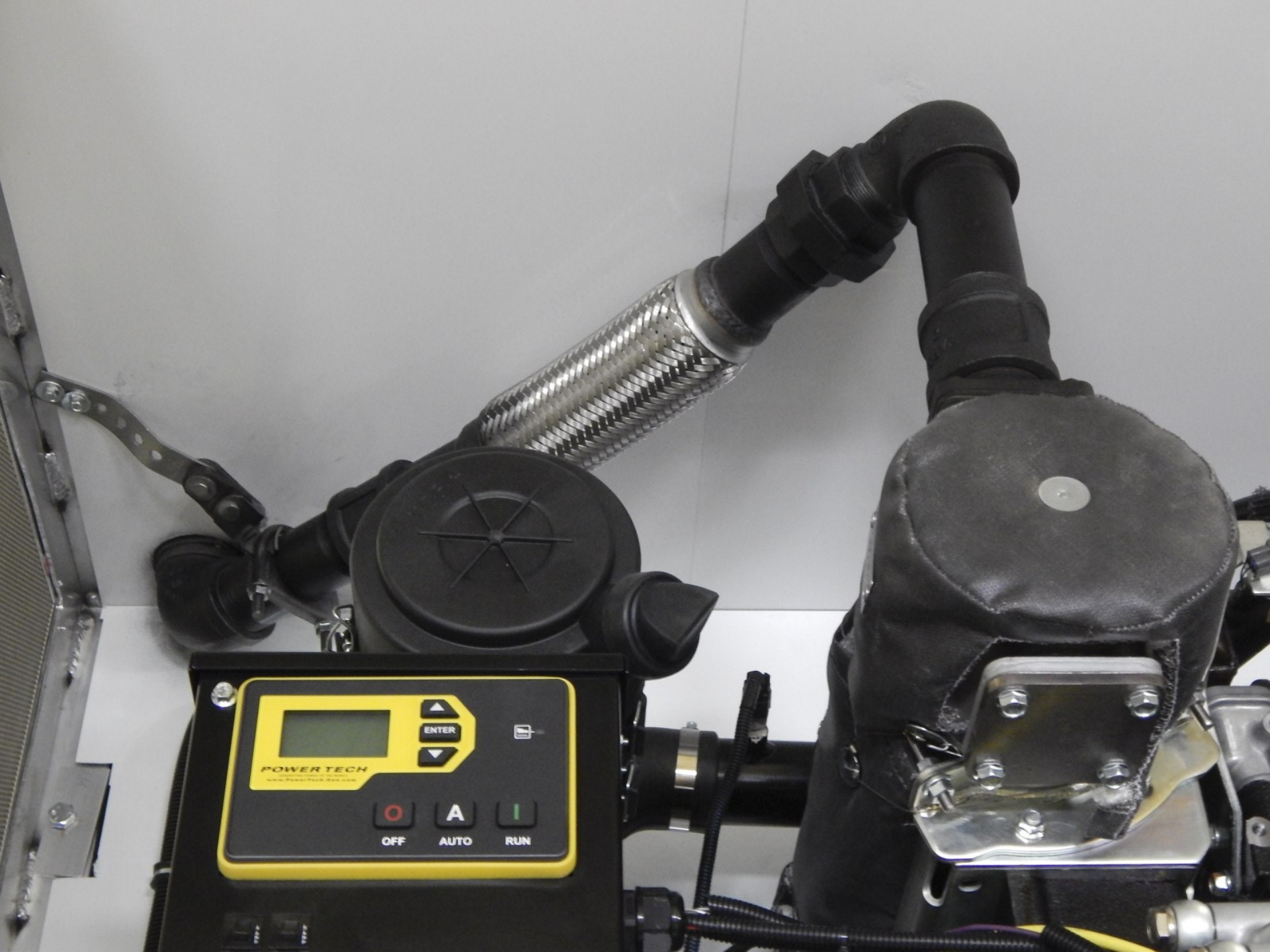


CAUTION
Do not touch the engine or its parts
until the engine has cooled.
Always wear eye protection
when working on the engine.

MADE IN THE USA



GENERATOR



POWER TECH
www.PowerTech-Eng.com

ENTER

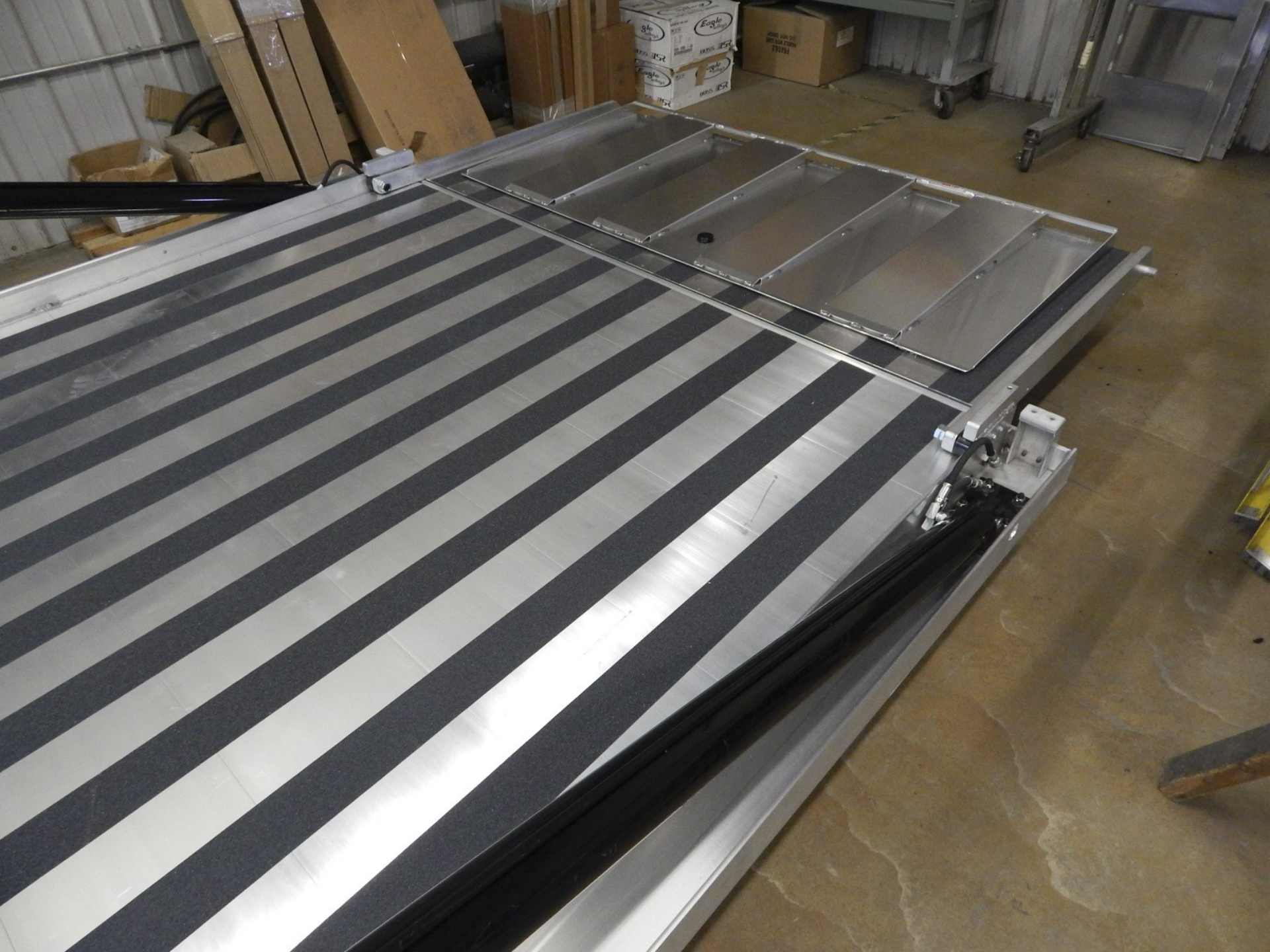
OFF A RUN

























COMPUTECH
RACEAIR
CLOUD







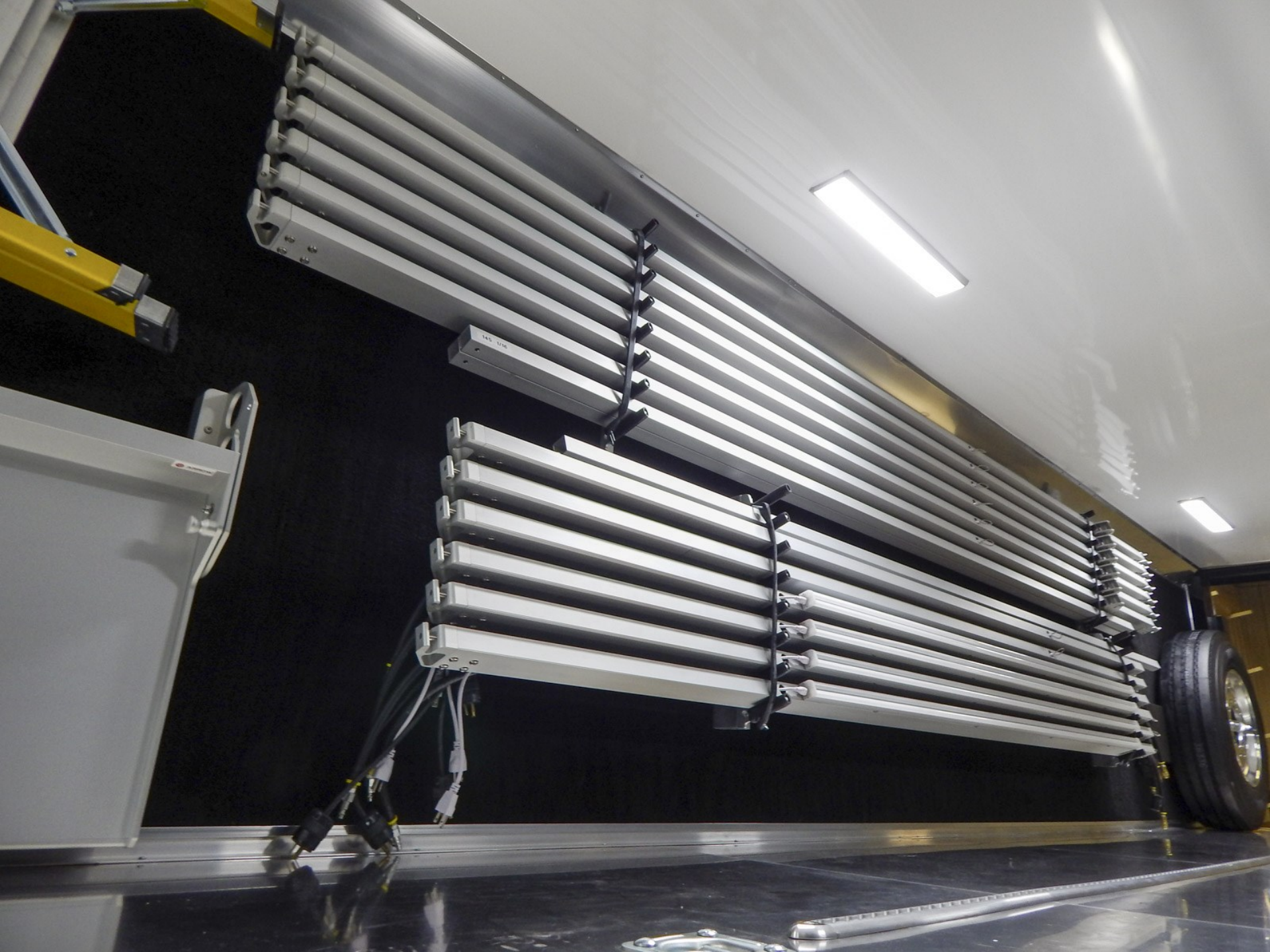












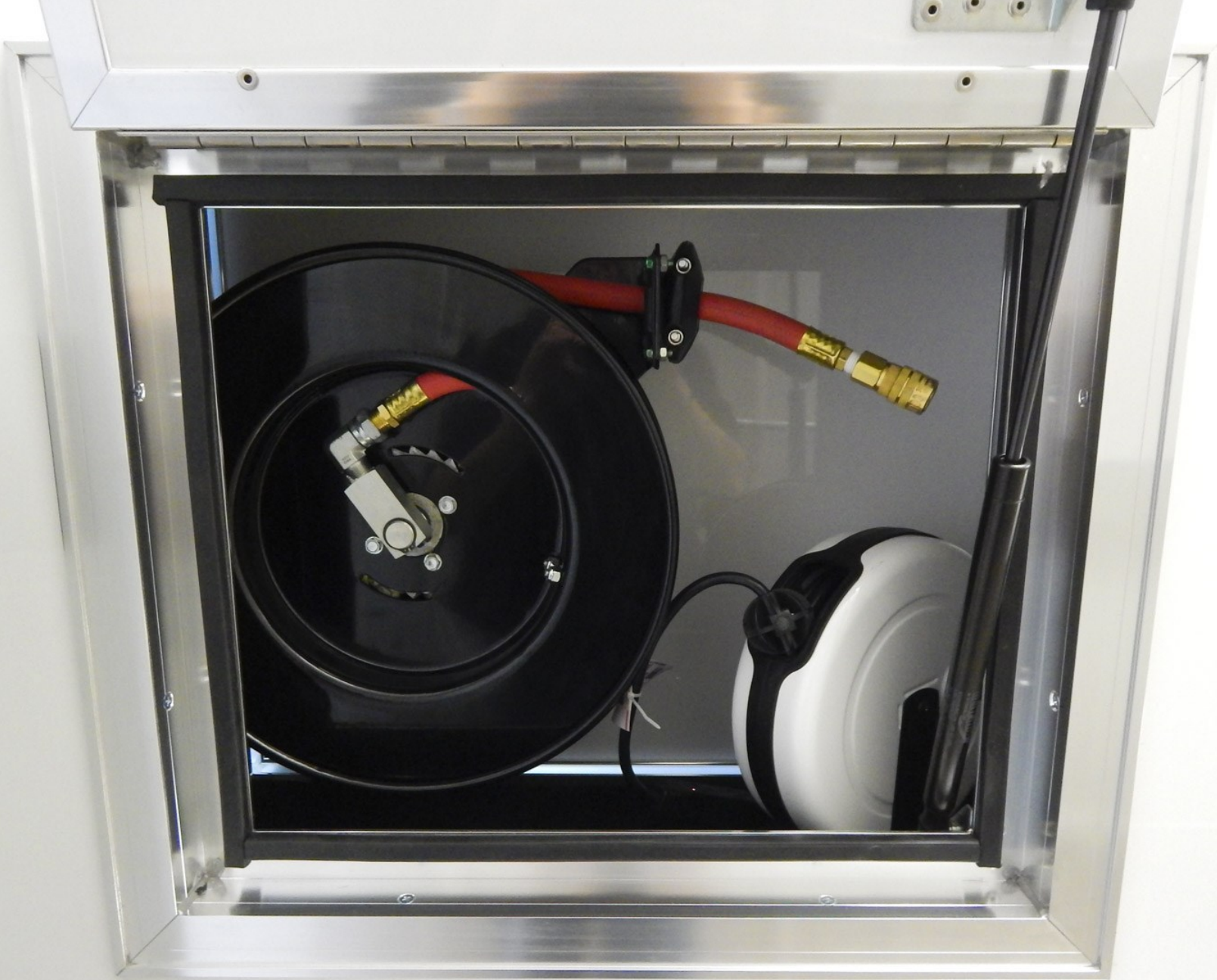






















LA DANGERA
MANTENETEVI SEMPRE
A DISTANZA
DALLA MANIPOLAZIONE
PER EVITARE
DANNI ALLE
MANI











DANGER
This area contains electrical components. Do not touch or tamper with these components. If you notice any electrical issues, contact a qualified technician immediately. Failure to follow these instructions may result in fire, injury, or death.

LISTER















⚠ DANGER

Read and understand the instructions on this sign before using the equipment. Failure to follow these instructions may result in personal injury or property damage. The following signs apply to all equipment in this area. They are intended to provide a general warning of the hazards associated with the use of the equipment.

The following signs apply to all equipment in this area:

1. Do not touch the equipment with bare hands.
2. Do not touch the equipment with wet hands.
3. Do not touch the equipment with oily hands.
4. Do not touch the equipment with greasy hands.
5. Do not touch the equipment with dirty hands.
6. Do not touch the equipment with contaminated hands.
7. Do not touch the equipment with hands that are not clean.
8. Do not touch the equipment with hands that are not dry.
9. Do not touch the equipment with hands that are not free of jewelry.
10. Do not touch the equipment with hands that are not free of nail polish.
11. Do not touch the equipment with hands that are not free of makeup.
12. Do not touch the equipment with hands that are not free of hair.
13. Do not touch the equipment with hands that are not free of clothing.
14. Do not touch the equipment with hands that are not free of shoes.
15. Do not touch the equipment with hands that are not free of socks.
16. Do not touch the equipment with hands that are not free of underwear.
17. Do not touch the equipment with hands that are not free of pants.
18. Do not touch the equipment with hands that are not free of shirts.
19. Do not touch the equipment with hands that are not free of blouses.
20. Do not touch the equipment with hands that are not free of dresses.
21. Do not touch the equipment with hands that are not free of skirts.
22. Do not touch the equipment with hands that are not free of coats.
23. Do not touch the equipment with hands that are not free of jackets.
24. Do not touch the equipment with hands that are not free of sweaters.
25. Do not touch the equipment with hands that are not free of cardigans.
26. Do not touch the equipment with hands that are not free of blouses.
27. Do not touch the equipment with hands that are not free of shirts.
28. Do not touch the equipment with hands that are not free of blouses.
29. Do not touch the equipment with hands that are not free of shirts.
30. Do not touch the equipment with hands that are not free of shirts.

























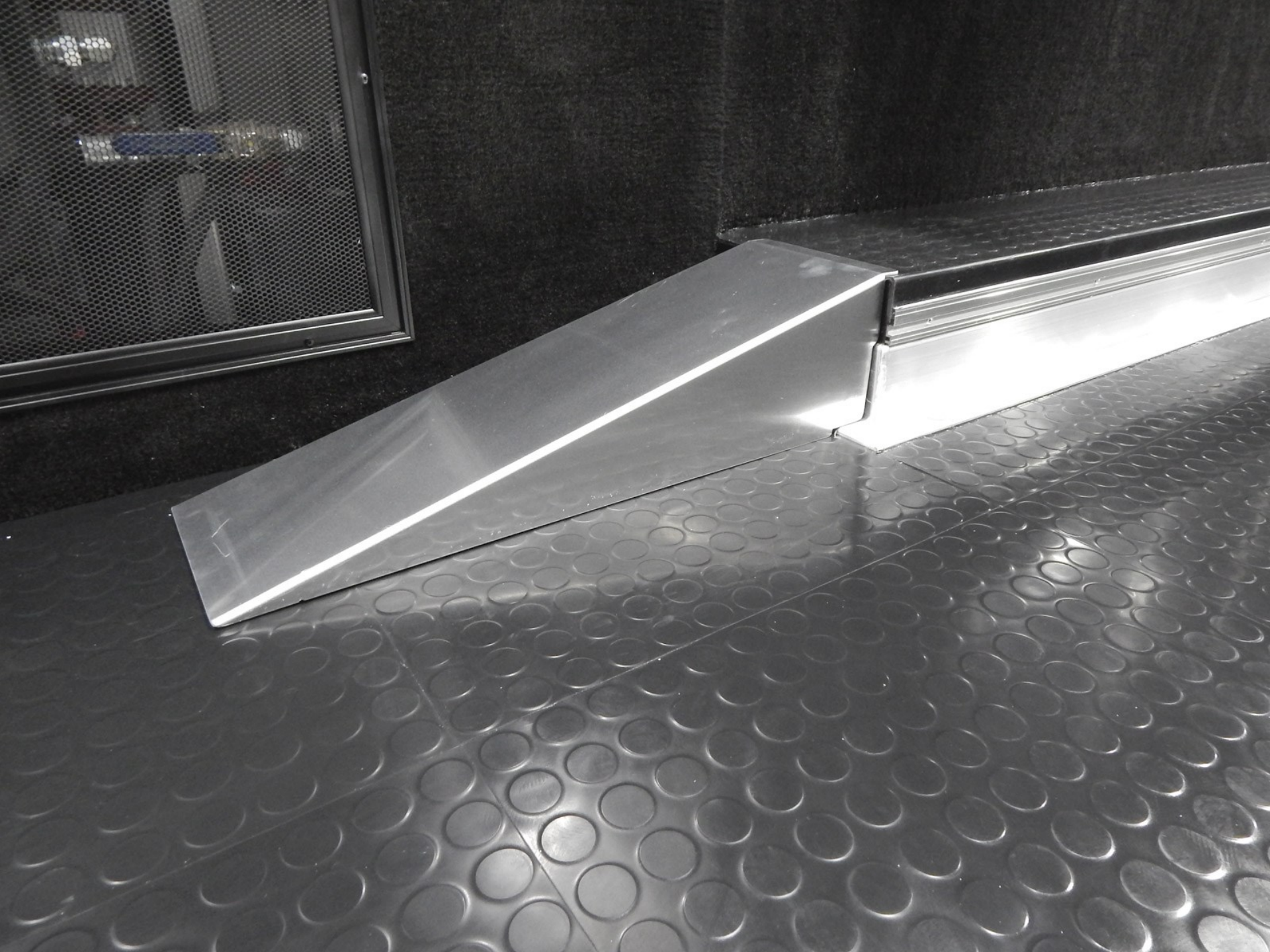








































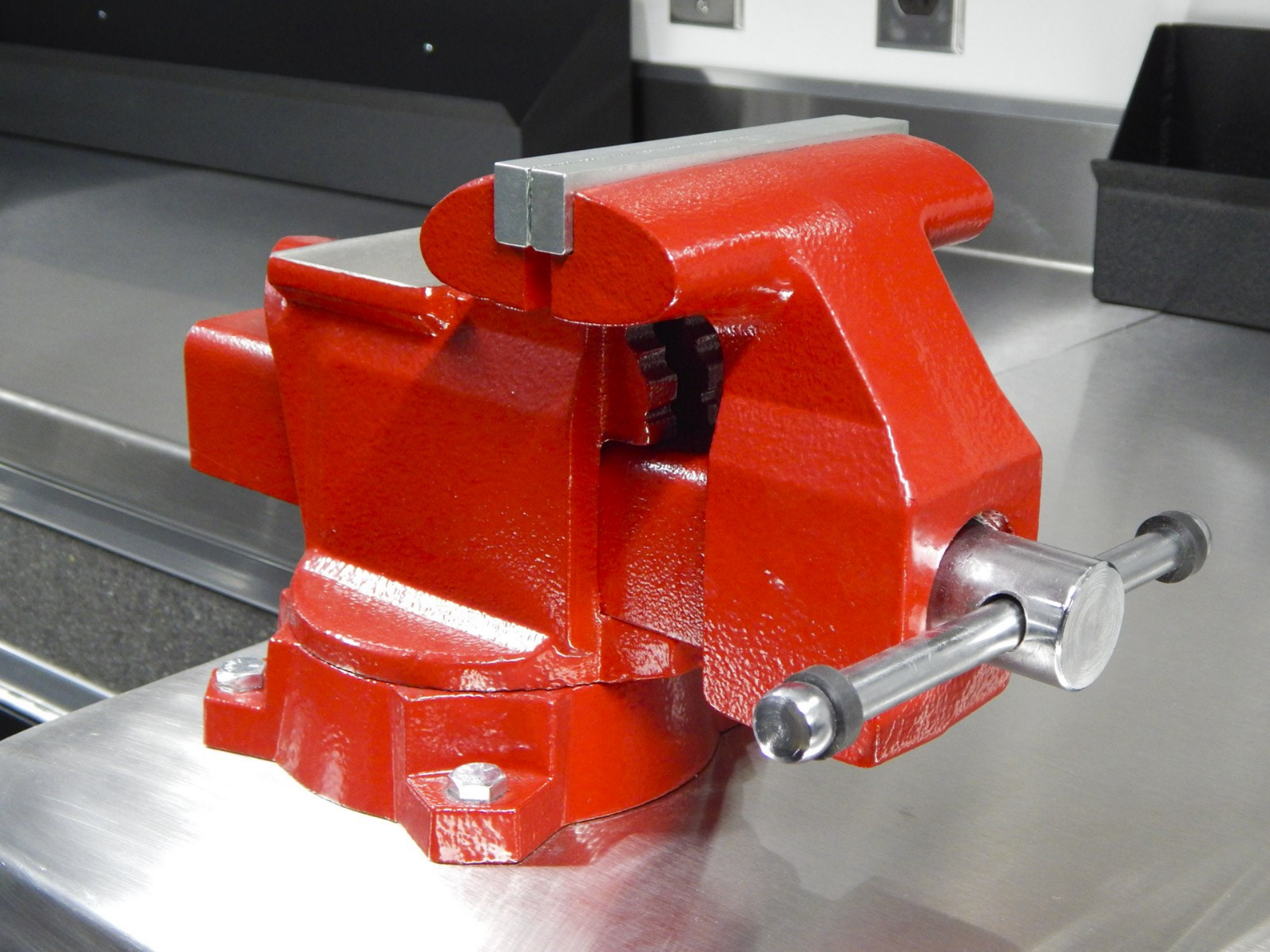


LISTA

LISTA

LISTA





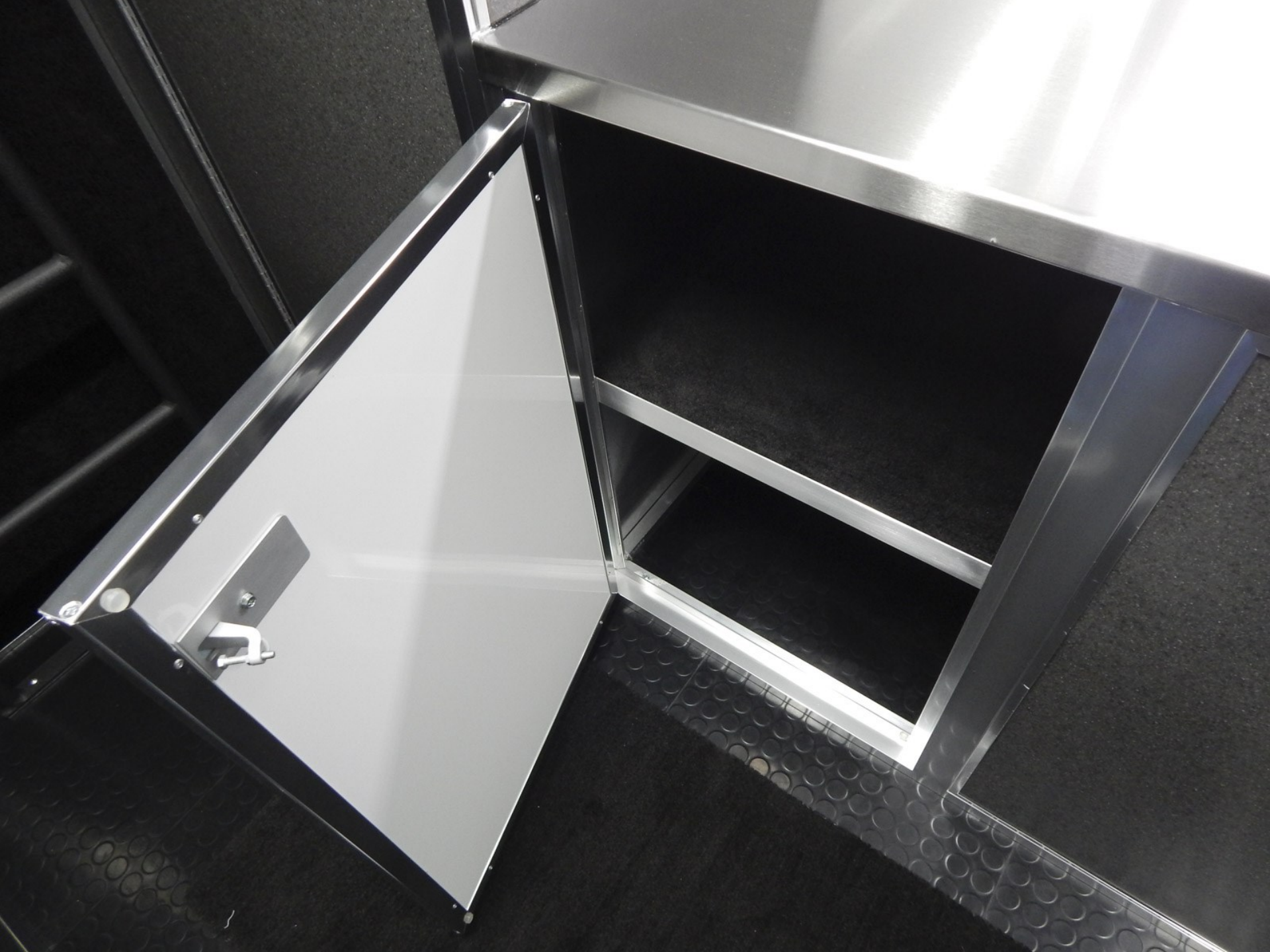
























31UC10
MAXIMUM ALLOWED AIR FLOW (SEE TABLE ON LEFT)
MAXIMUM EXISTING PRESSURE 30" H₂O
ELECTRICAL - 120V 60 HZ 15 AMP
ELECTRICAL - 240V 60 HZ 15 AMP
ELECTRICAL - 240V 60 HZ 30 AMP
ELECTRICAL - 240V 60 HZ 40 AMP
ELECTRICAL - 240V 60 HZ 50 AMP
ELECTRICAL - 240V 60 HZ 60 AMP
ELECTRICAL - 240V 60 HZ 70 AMP
ELECTRICAL - 240V 60 HZ 80 AMP
ELECTRICAL - 240V 60 HZ 90 AMP
ELECTRICAL - 240V 60 HZ 100 AMP
ELECTRICAL - 240V 60 HZ 110 AMP
ELECTRICAL - 240V 60 HZ 120 AMP
ELECTRICAL - 240V 60 HZ 130 AMP
ELECTRICAL - 240V 60 HZ 140 AMP
ELECTRICAL - 240V 60 HZ 150 AMP
ELECTRICAL - 240V 60 HZ 160 AMP
ELECTRICAL - 240V 60 HZ 170 AMP
ELECTRICAL - 240V 60 HZ 180 AMP
ELECTRICAL - 240V 60 HZ 190 AMP
ELECTRICAL - 240V 60 HZ 200 AMP

- Death or serious injury. To reduce risk:
1. Do not ride in the vehicle storage area when vehicles are present.
2. Do not sleep in the vehicle storage area when vehicles are present.
3. Clean doors and windows in walls of separation (if installed) when any vehicle is present after it has been stored.
4. Run fuel out of engine, or dispense fuel inside shut-off fuel at the tank.
5. Do not block, transport, or air ventilation this vehicle.
6. Open the windows, openings, or air ventilation systems provided for venting the transportation area when vehicles are present.
7. Do not operate propane appliances, pilot lights, or electrical equipment when motorized vehicles are present.



