

Custom All Aluminum Stacker Trailers

BUILT FOR SPEED

High Quality Trailers Built by Racers for Racers

SEMI, GOOSENECK, FIFTH WHEEL AND PULL-A-LONG TRAILERS

MARKOGLU LIFTGATE STACKER TRAILER



Call for a Quote - 815.426.2761

www.tande-racetrailers.com

UNDER LIFT
SAFETY PINS!

Custom Built Trailers by...

T & E ENT.

Auto Haulers

HERSCHER, IL.
815-426-2761



Custom Built Trailers by...

T & E ENT.
Auto Haulers

HERSCHER, IL.
815-426-2761













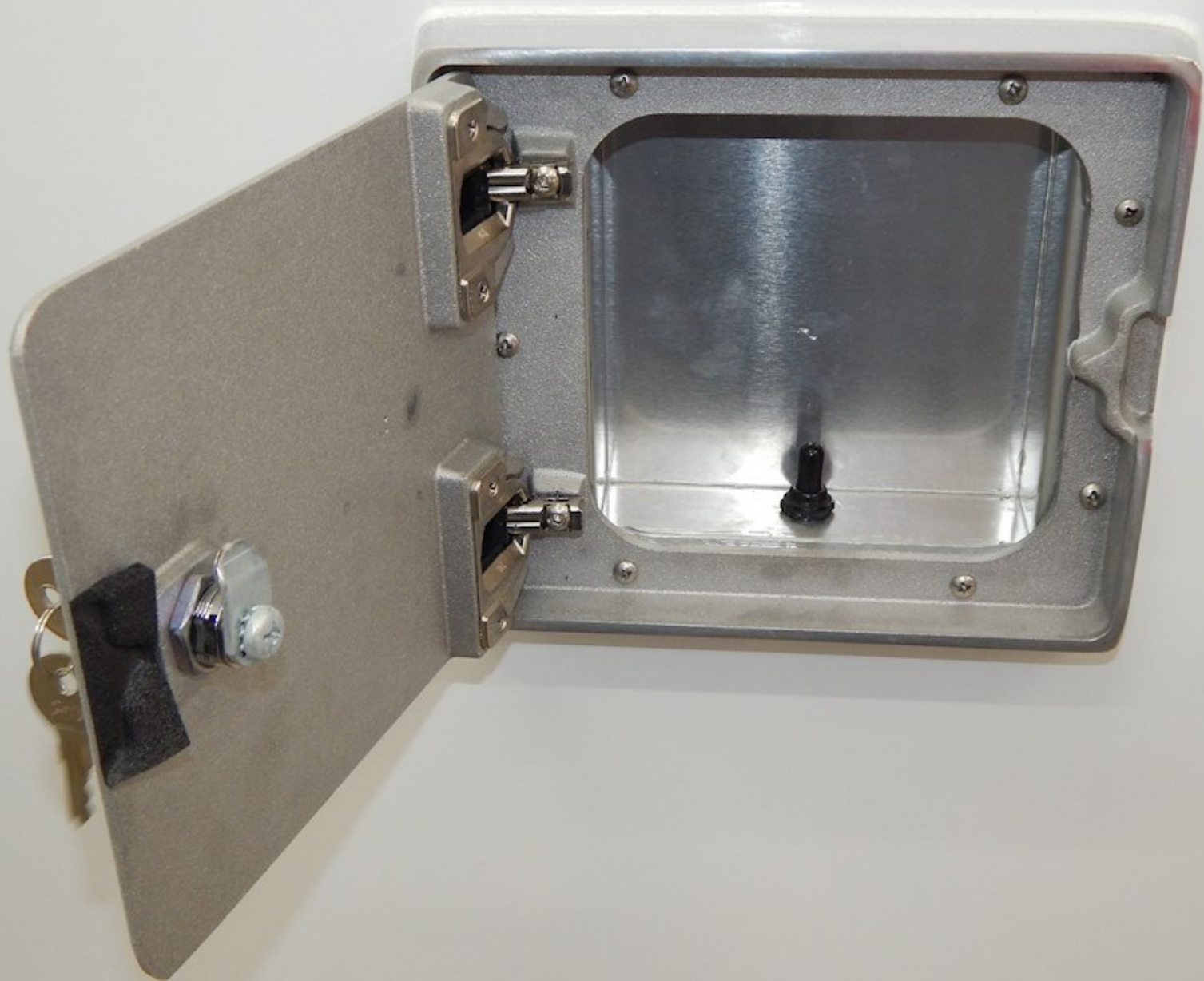














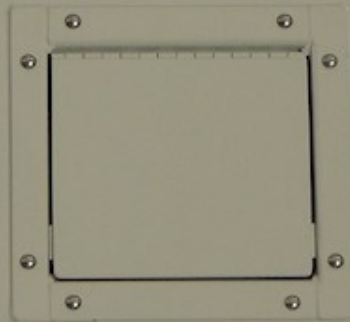




Custom Built Trailers by...

T & E ENT
AutoHaulers

HERSCHER, IL.
815-426-2761

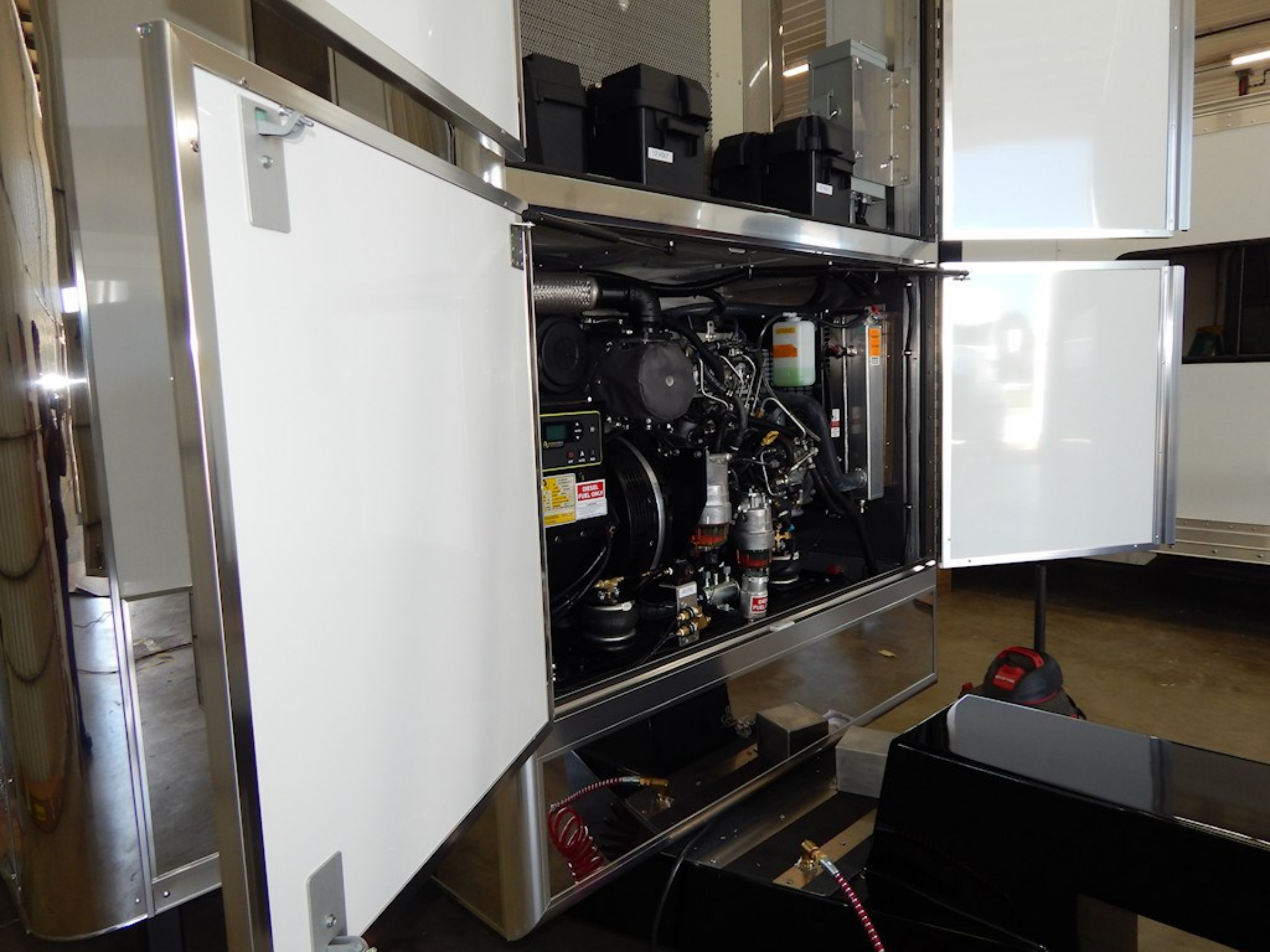




Custom Built Trailers by...

T & E ENT
Auto Haulers

**HERSCHER, IL.
815-426-2761**









CAUTION **CAUTION** **DANGER** **WARNING** **WARNING**

BECAUSE ALL
WORKING WITH
ELECTRICITY
IS DANGEROUS
AND CAN BE
FATAL

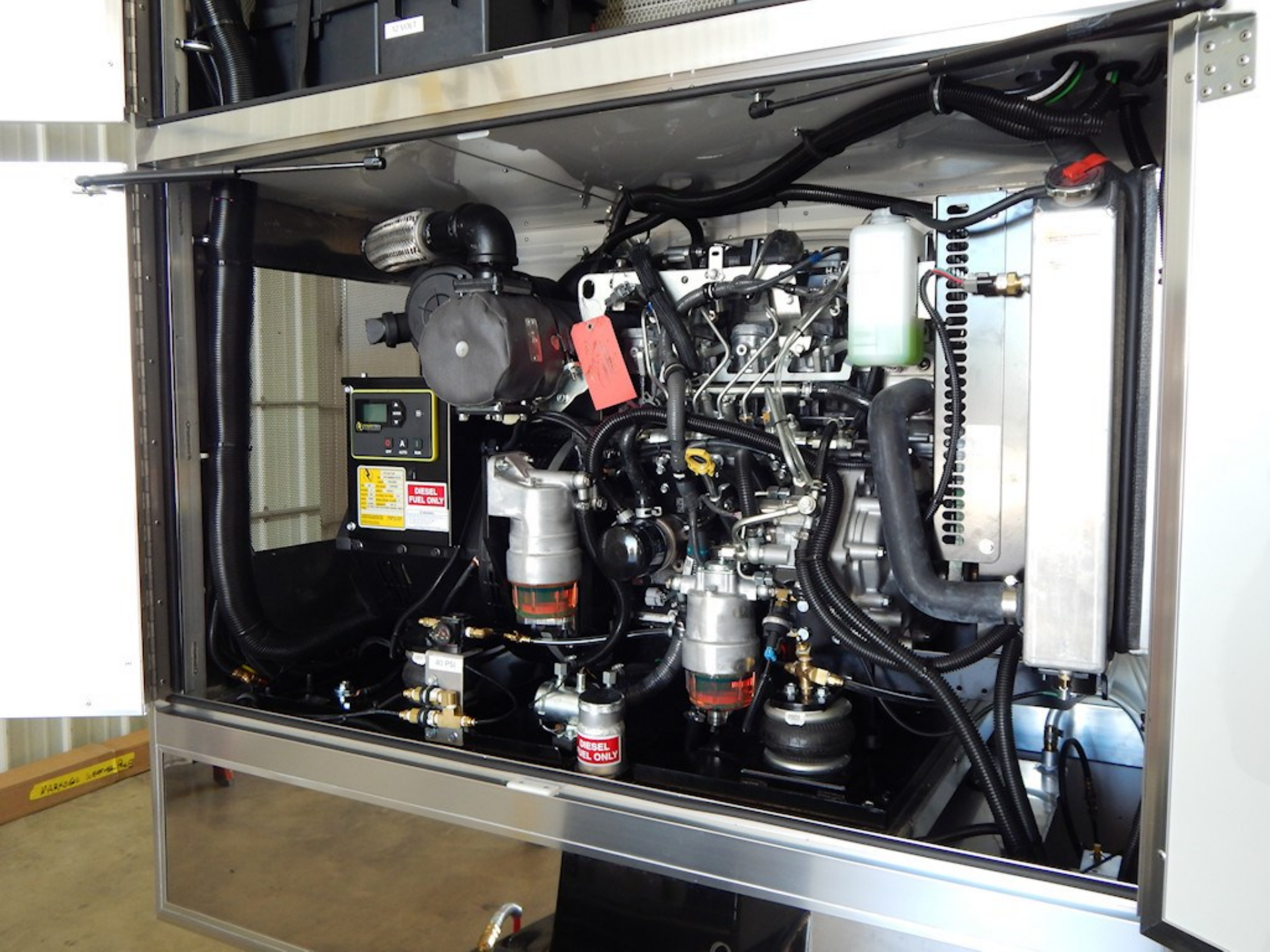
DO NOT TOUCH
ANY PARTS
WHILE THE
MACHINE IS
ON

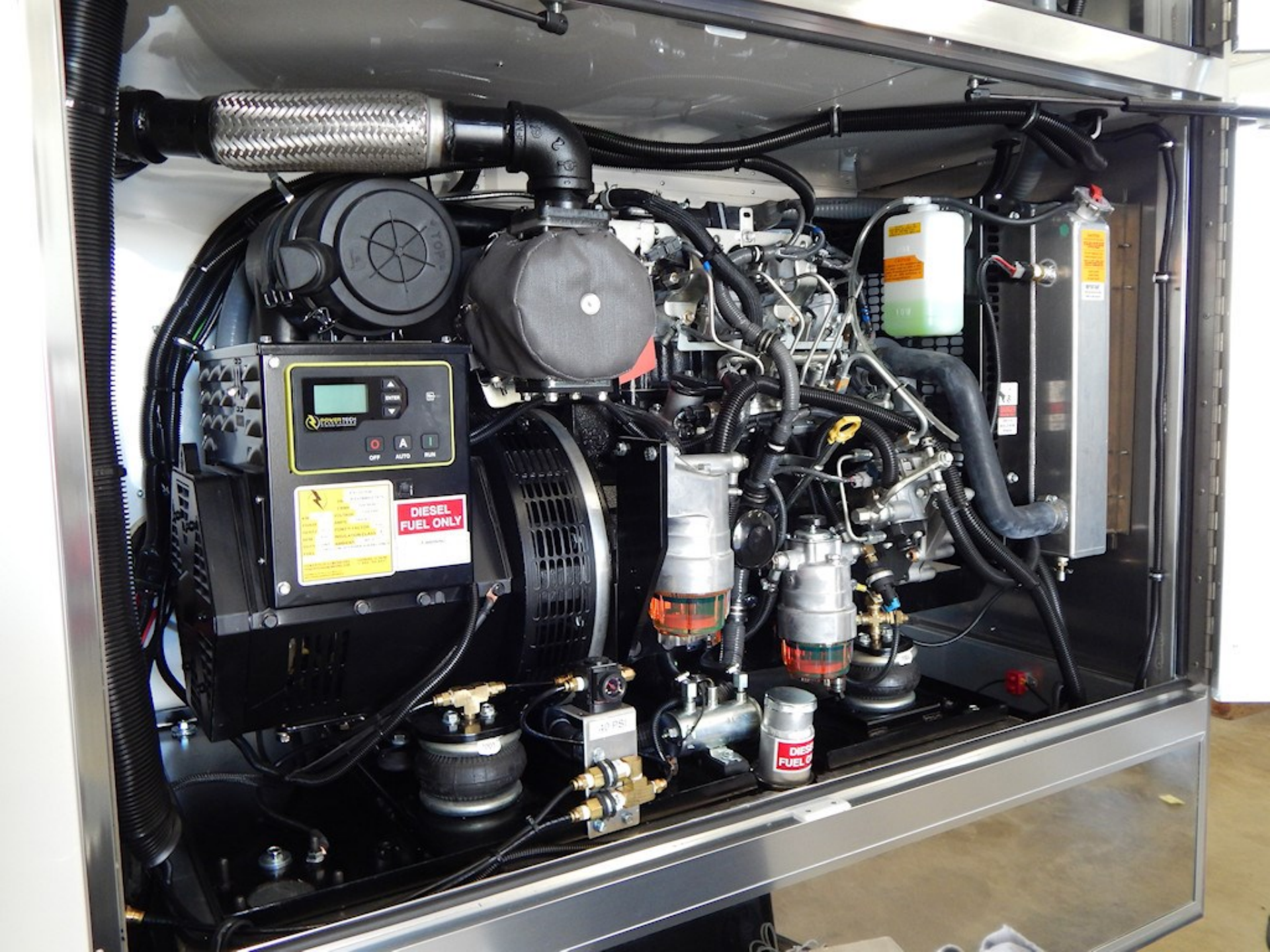
DO NOT TOUCH
ANY PARTS
WHILE THE
MACHINE IS
ON

DO NOT TOUCH
ANY PARTS
WHILE THE
MACHINE IS
ON

FUEL ONLY

NO. 1 IN 20



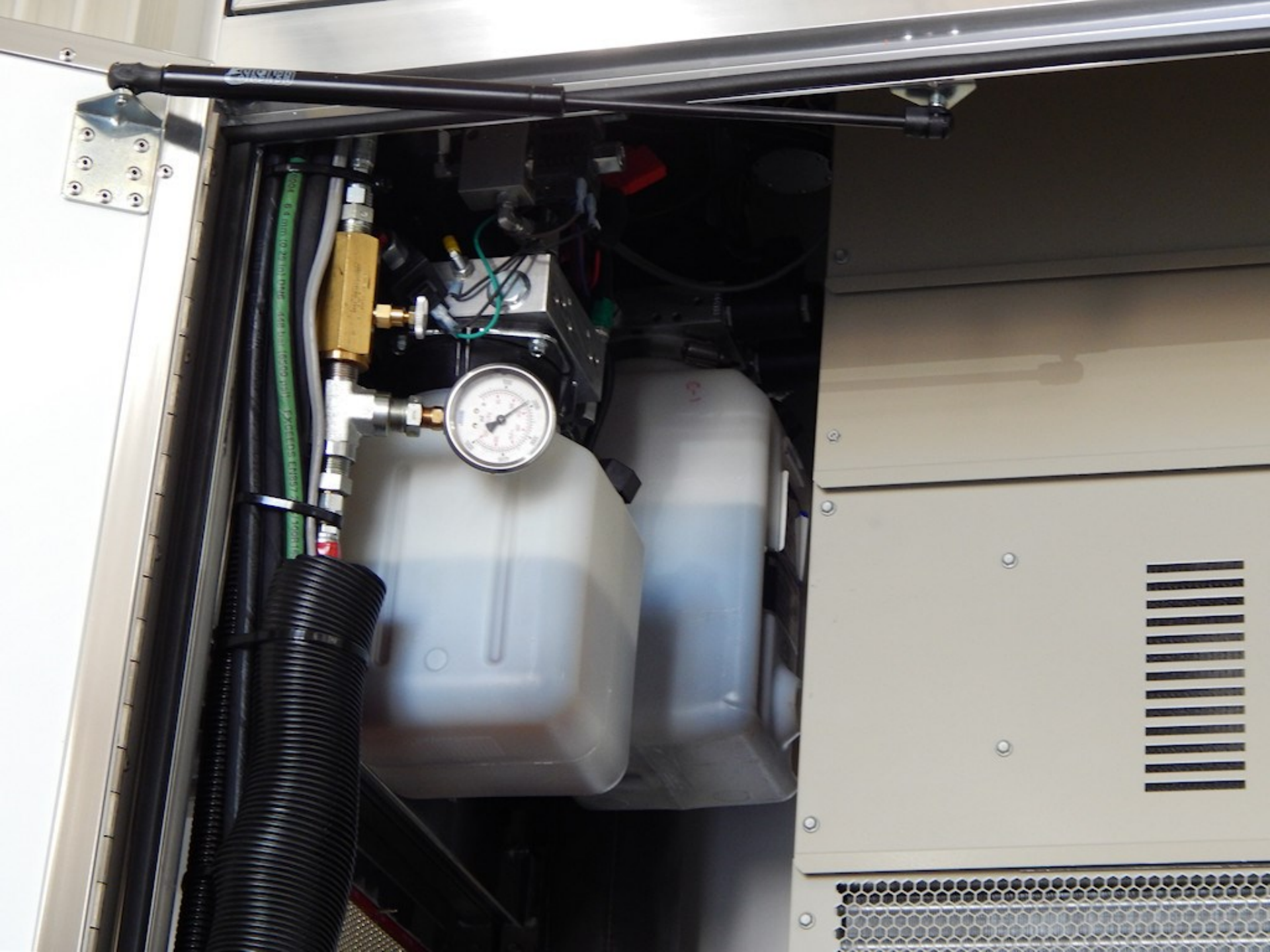


Control Panel Labels:
OFF AUTO RUN
DIESEL FUEL ONLY

Fuel Filter Label:
DIESEL FUEL ONLY

40 PSI







12 VOLT



CAUTION
A solution of 50% antifreeze and 50% water should be used in this engine. (Pouring point about 32°F) Do not use 100% antifreeze, or severe damage will occur.

100 L

CAUTION

LOW

CAUTION
WPCAT
WATER PUMP CONTROL THERMOSTAT

DANGER
DO NOT TOUCH
HOT SURFACES











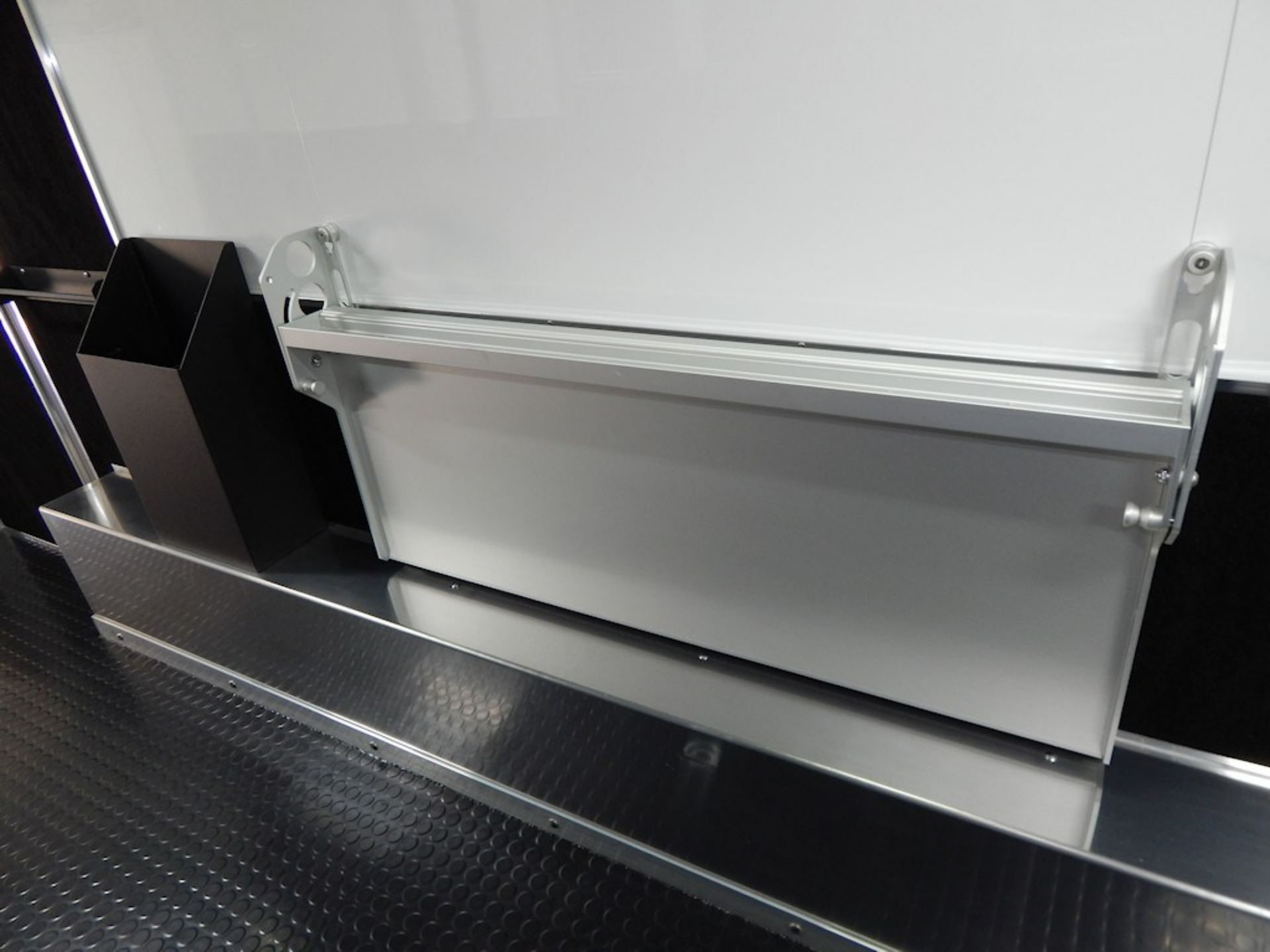


WARN
VRX
45-S













**DANGER: DO NOT WALK, SIT OR STAND
UNLESS LIFT UNIT HAS BEEN SECURED**





























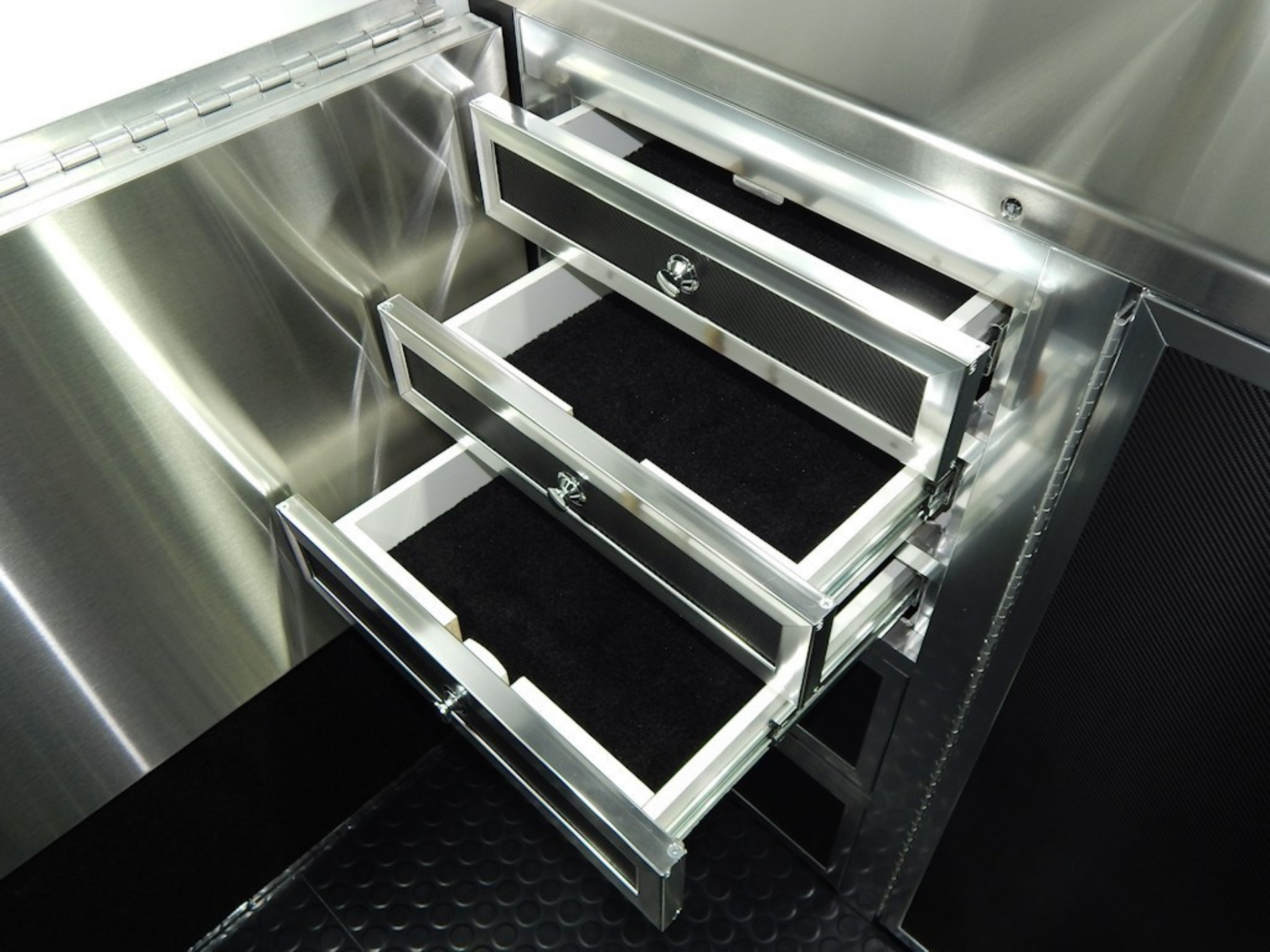












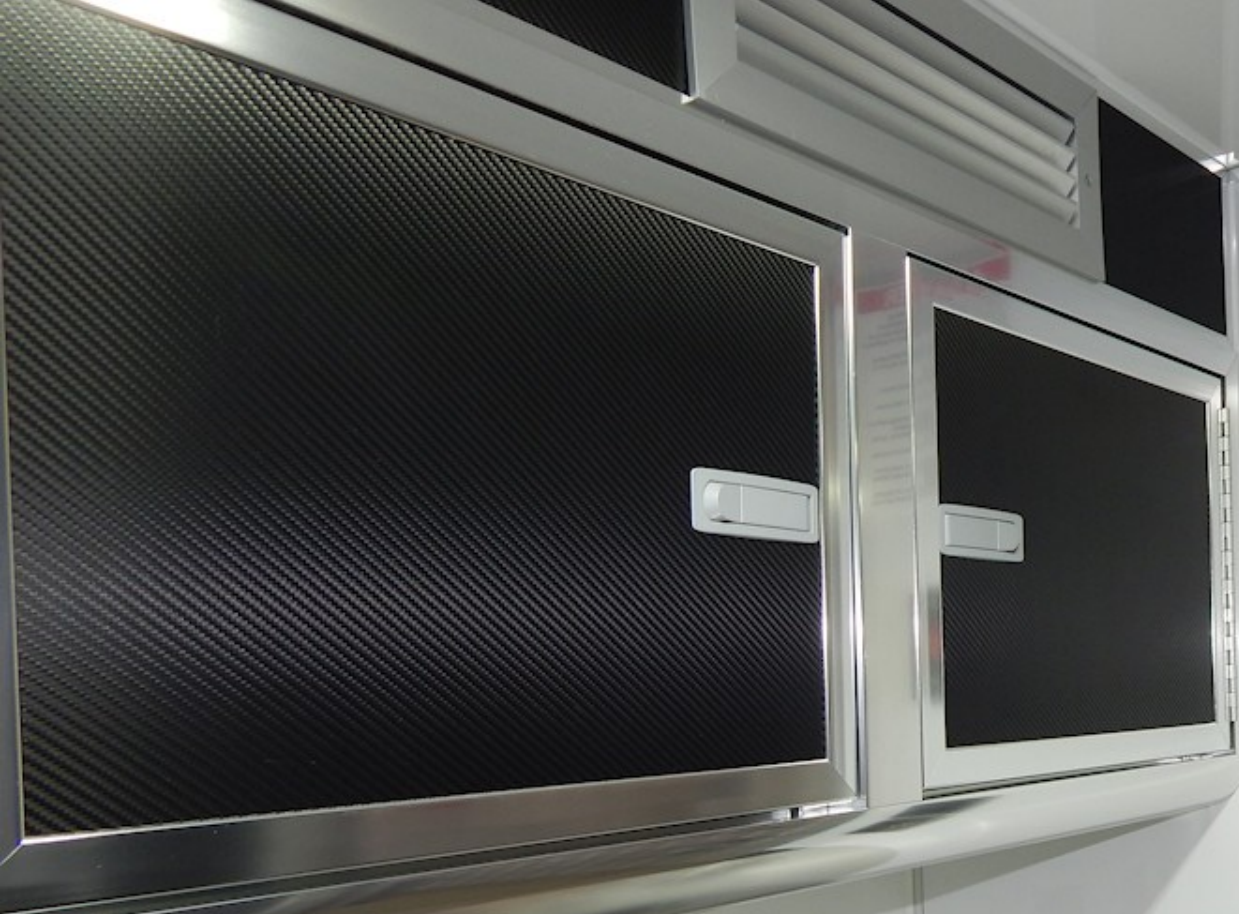






⚠ DANGER

Vehicles and equipment powered by internal combustion engines and placed in recreational vehicles can cause carbon monoxide poisoning or asphyxiation, which could result in death or serious injury.
The flammable liquids used to power these items can cause a fire or explosion, which can result in death or serious injury.
To reduce risk:
1. Do not ride in the vehicle storage area when vehicles are present.
2. Do not sleep in the vehicle storage area when vehicles are present.
3. Close doors and windows in walls of separation (if installed) when any vehicle is present.
4. Run fuel out of engines of stored vehicles after shutting off fuel at the tank.
5. Do not store, transport, or dispense fuel inside this vehicle.
6. Open the windows, openings, or air ventilation systems provided for venting the transportation area when vehicles are present.
7. Do not operate propane appliances, pilot lights, or electrical equipment when motorized vehicles are present.













DANGER

powered by internal
and placed in recreational
carbon monoxide poisoning or
could result in death or serious
injury.
is used to power these items
position, which can result in
injury.
reduce risk:
vehicle storage area when
vehicle storage area when
doors in walls of separation
vehicle is present.
of stored vehicles after
and/or dispense fuel inside
doors, or air ventilation
during the transportation
hazard.
cylinders, pilot lights,
on motorized vehicles

















